

Assembly : Monday : 20th June Admin - Student Learning Awards Held in The Gym 9am Start

IMPORTANT DATES TO REMEMBER

Friday 17th June	Pupil Free Day - Student free day as teachers conduct Parent/Teacher interviews
Monday 20th June	P.F.F. Meeting after Assembly - All are welcome to attend
Friday 24th June	Casual Dress Day - Gold coin donation sponsoring Albury Wodonga Children's Ward
Friday 24th June	Last day of Term 1 - School will finish at 2:30pm
Due Now!!	Please contact the front office if you haven't already paid your school fees as this is a necessity. Payment arrangements can be discussed if required.

Be Safe

Be Respectful

Be A Learner

Enrolments for 3 and 4 year old Kinder and Foundation are now open at the front office. Please come and collect an enrolment form.



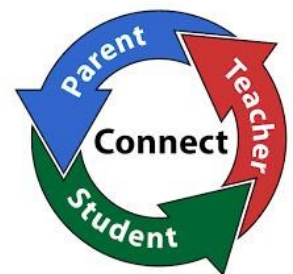
Dear Parents / Caregivers,

Parent \Teacher\ Student led conferences:

These meetings between families and the classroom teacher are happening tonight from 4-6pm and during tomorrow (Friday).

Thank you to those families who booked their appointment time via COMPASS and have accessed it to keep abreast with the weekly Linkletter and also to read their child's semester one report. This is an easily accessed and sustainable method of communicating with families and over time we will increase the functionalities it offers.

If you did not make an appointment via COMPASS your child will have taken home yesterday a time for you to attend on either Thursday evening or Friday. We expect that families and students will attend the appointment time to celebrate the achievements made in semester one and become informed of learning goals for semester two. Please endeavour to be punctual for your appointment so no one is kept waiting during the day.



Friday June 17th is a Pupil Free Day and students need only to attend school with their parents for the Parent Teacher Interview.

PFF SAUSAGE SIZZLE

Today, our wonderful PFF conducted a Sausage Sizzle for our students. It was the perfect day for it, and our students really enjoyed this treat. A special thank you to all the helpers today – you did a lovely job: Amanda Hogan, Rowena Barton, Kerr-Anne Shepherdson, Phet Dykstra, Karen Viney and Theresa Booth. We hope this assists you all in getting closer to your fundraising goal of \$2000 for the year.

Here is a couple of quotes from some very satisfied customers:

'Thank you for helping our school with the Sausage Sizzle today. I really enjoyed it like all the other people did.' – *Shaylyn Kilsby Year 3 /4 P*

'It was a great day for a Sausage Sizzle because it was pretty cold and it was lovely to have some hot food and a nice drink.' – *Joey Shepherdson Year 3 /4 P*



Spot checks on Driver Behaviour around school crossings:

Please be advised that Wodonga Council by laws personnel have been monitoring driver behaviour around our school crossing recently and that they regularly monitor all school crossings around Wodonga. If your vehicle has been photographed parking inappropriately in the vicinity of the crossing an infringement notice will be issued. This spot check is designed to keep our students safe as they arrive at school during peak times.



School Fees' Reminder

A reminder to families who have NOT net PAID Student's essential education items to support standard curriculum (\$50 per student) please arrange to do so now.

Last assembly and PFF meeting for term two:

On Monday June 20th we will be holding our final assembly for term 2 in the gym at 9am. At this assembly Learning Achievement Awards from



each teacher including specialist staff will be announced. We consider this an important event and have asked Mr. Tony Ross who is an educational consultant who has been working with our school as a result of last year's review to present the awards to the students alongside their teachers who will give a small presentation speech outlining the achievements of the student. The winners of these awards will be enjoying a special lunch during the last week of term.

After assembly Tony is looking forward to meeting parents at our PFF meeting to be held in the staffroom.

I hope many parents will consider coming to this assembly.

Building update:

I'm sure families have noticed how busy the school has been recently with a large number of tradesmen on site working on our new school building which is developing fast. The weather has not slowed them down even though some vehicles have become bogged on our soccer field! Plasterboard and acoustic ceiling lining has been placed internally and paving areas outside the learning spaces have been completed. Over the holidays more work will continue on some other projects we are having done as part of the overall project. This includes continued preparation of Block A in readiness to dismantle it in late term 4 and external painting of our gym and the development of a toilet and bubbler facility in the canteen storeroom for students to access whilst doing PE. We will also be having a 2.1m fence erected along the boundary with the park, creek and west along Lawrence St. from the gym, including a locked gate at the steps. Work will soon begin on a bore to ensure we can keep our grassed areas maintained during the summer months.



Regards,

**Regards,
Jocelyn Owen**

Casual Dress Day - Friday 24th June



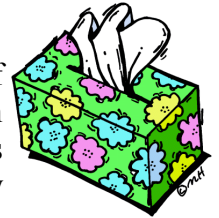
SLC are conducting a casual dress day on Friday 24th June.

It is a \$2 coin donation day.

Money raised will be donated to the Children's Ward at Albury-Wodonga Regional Health - 'Give me 5 for kids'.

Dear Parents,

We go through many boxes of tissues during the year, if you can donate 1 or 2 boxes to your child's classroom it would be greatly appreciated. Thank you to those who have done so already!



Student Wellbeing Report



Breakfast is said to be the most important meal of the day. It is important for each student to have breakfast before coming to school as this helps with their concentration and ability to focus on their school work rather than their rumbling stomach. We have been provided with some breakfast foods for families that may require them, as we all know there are times when the cupboard is bare. If you feel your family would benefit from the assistance of this program or you have any questions, please see me (Mrs Potter) and I will supply you with a breakfast pack.

Melissa Potter
Wellbeing



Student Medical Ambulance Cover :

This is a reminder that The Department *does not provide* personal accident insurance ambulance cover for students. Parents / Guardians of students who do not have student accident insurance/ambulance cover, are responsible for paying the cost of medical treatment for injured students, including the cost of ambulance attendance/transport and any other transport costs.